

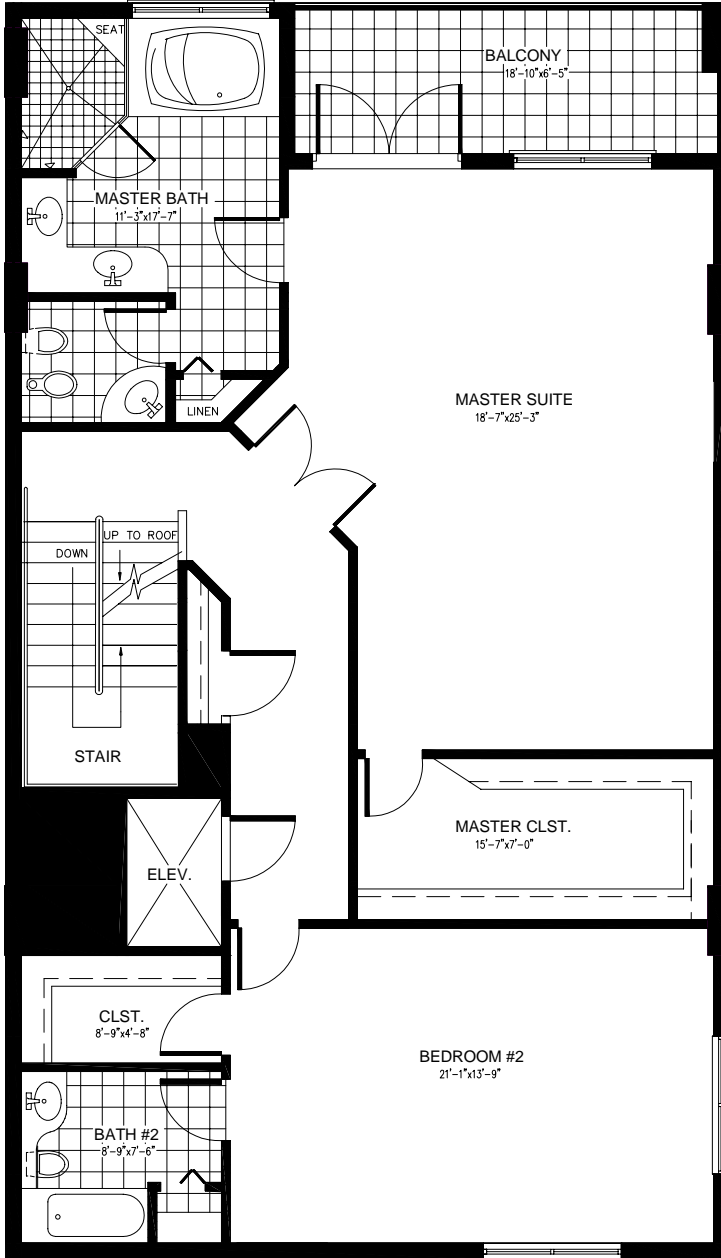
PENTHOUSE 'C'
1st FLOOR

LIVING S.F. = 1,377 S.F.
BALCONY = 196 S.F.
TOTAL = 1,573 S.F.

Spencer and Associates Architecture, Inc.

Architecture Planning
1215 South Myrtle Ave
Clearwater, Florida 33756
727/449-ARCH 727/442-7192 fx
www.spencerarch.com sjs@spencerarch.com
AA0003292
© Spencer and Associates Architecture Inc. 2004

MONTE CARLO – First Floor Plan



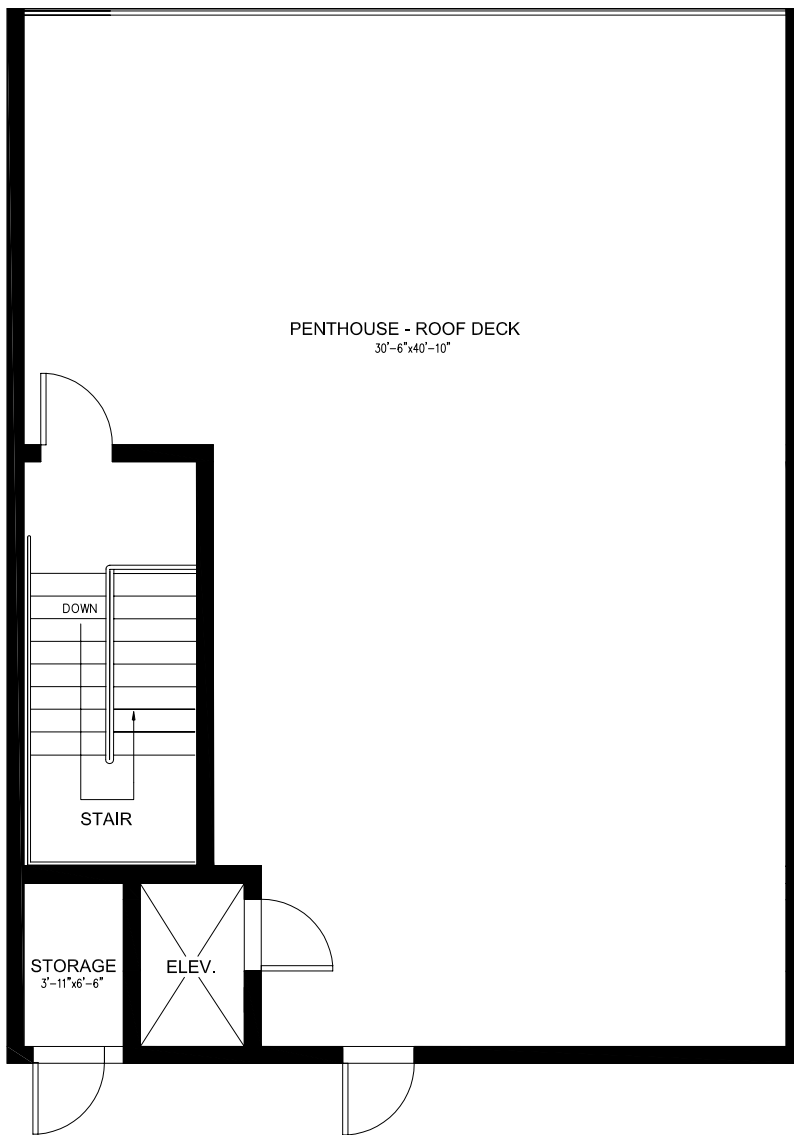
PENTHOUSE 'C'
2nd FLOOR

LIVING S.F. = 1,374 S.F.
BALCONY = 115 S.F.
TOTAL = 1,489 S.F.

Spencer and Associates Architecture, Inc.

Architecture Planning
1215 South Myrtle Ave
Clearwater, Florida 33756
727/449-ARCH 727/442-7192 fx
www.spencerarch.com sjs@spencerarch.com
AA0003292
© Spencer and Associates Architecture Inc. 2004

MONTE CARLO – 2nd Floor Plan



PENTHOUSE 'C'
ROOF DECK

ROOF DECK = 1,192 S.F.

Spencer and Associates Architecture, Inc.

Architecture Planning
1215 South Myrtle Ave
Clearwater, Florida 33756
727/449-ARCH 727/442-7192 fx
www.spencerarch.com sjs@spencerarch.com

AA0003292
© Spencer and Associates Architecture Inc. 2004

MONTE CARLO– Roof Deck Plan